



Application Modernization

- Michael Kaplan
- Senior Account Executive, Federal Government | NA AMC Enterprise
- mkaplan@rocketsoftware.com
- Mobile: 804.908.2207
- Website: <https://www.rocketsoftware.com/>
- LinkedIn: <https://www.linkedin.com/in/mikekap>



Agenda

1. Modernize / Re-Platform discussion
2. Introduction to the Application Modernization and Connectivity (AMC) suite
 - Enterprise Analyzer
 - Enterprise Developer
 - Enterprise Server

Michael Kaplan - Senior Account Executive, Federal Government
mkaplan@rocketsoftware.com

Kevin Fry – Senior Solutions Consultant
kfry@rocketsoftware.com

James Brown – Senior Account Executive, ASG Field Sales
jbrown2@rocketsoftware.com

Why Modernize / Re-Platform?



Reduce Costs



Control Expenses by Reusing Existing Assets



Data Analytics – Improve Decision Making



Effective Modern Development and Deployment Tools



Secure Infrastructure – Access and Data



Increase Efficiency and Effectiveness



Improve Quality and Customer Satisfaction

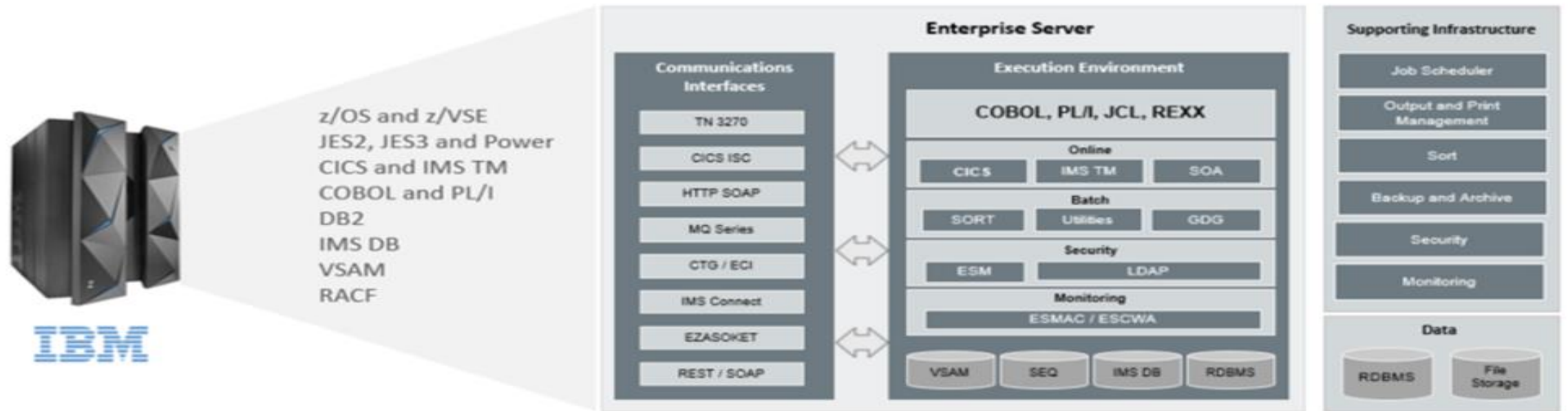


High Availability, Scalable Architecture, DR

Mainframe Modernization

Enterprise Server Reference Architecture

Proven Technology



Enterprise Suite offers scalable and flexible analysis, development, test, and multi-platform deployment solutions



Enterprise Analyzer - Centralized application intelligence and analysis tool, knowledge base, and change management



Enterprise Developer - Application modernization and development based on Eclipse or Visual Studio IDEs



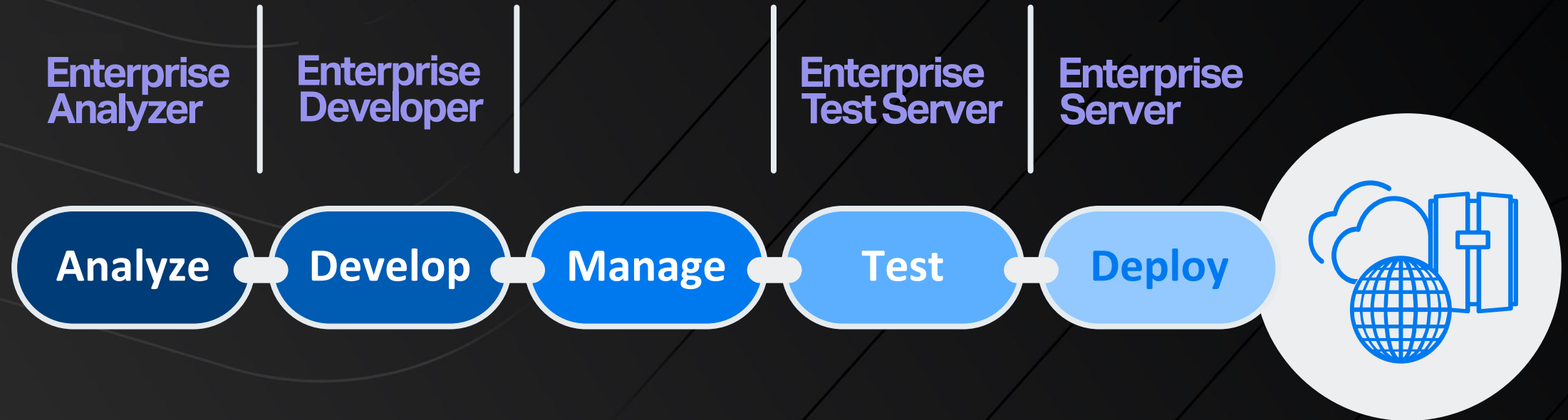
Enterprise Server - A flexible, secure, and scalable deployment environment

Professional Services – The Complete Target Solution

- Must look at ALL components
 - how they fit together
 - not just the code base
- Guidance based on experiences
- Fit-for-Purpose modernization recommendations
- Not everything has to be completely changed



AMC Enterprise Suite Products



Enterprise Analyzer

Understanding & Integration

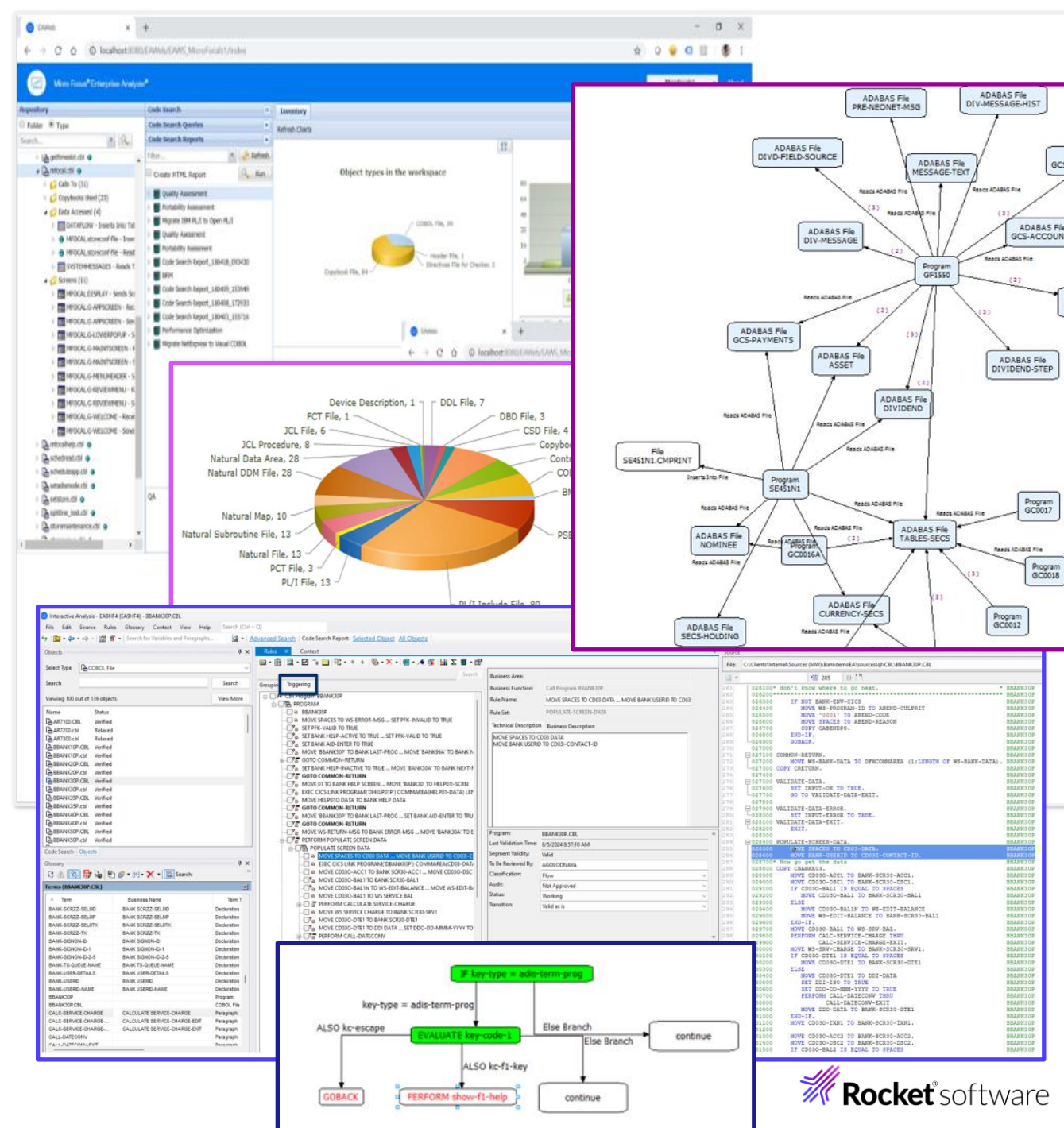
How did I get here?

How is that used?

What happens if..?

Where is this done..?

- Automatic Interactive Visualisation of Data Flow, Call Maps, Source Dependencies, CICS Flow, Job Flows, Dead Code
- Pre-Migration Portability Assessment
- Interactive Impact and Change Analysis charts and reports cross programs and technologies
- Prepackaged searches for coding standards, application metrics, performance optimizations
- Enterprise scale compatible with all common mainframe subsystems
- Business Rules Management
- Integration into Enterprise Developer



Enterprise Analyzer - Application Assessment Overview

Targeted Questionnaire

L1Q Questionnaire

Last Updated Date and Time: 01/19/22 03:49 PM Updated By: Questionnaire Respondent

A. Business Situation, Timescales, and Environment Information

Account Information

Company Name	Credit Card Company
Company Address	
Company Primary Contact (Name/Title/Role/Responsibility)	Kevin Smith@CCC.com
Company Executive Sponsor (Name/Title/Role/Responsibility)	William Penn - Account Manager
Micro Focus Opportunity ID	O-994455
Micro Focus Account Executive	Pete Walters
Micro Focus Solution Engineer	Carol Bell

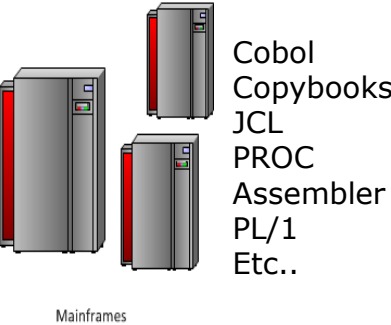
Business Drivers and Costs Related to the Application(s) to be Migrated

1. What does the application do for what business area? How critical is it to the business?	CCC is an internally developed US Credit Card application. It is also expected that the system remain operational 24x7 outside of planned/communicated edge windows.
2. What are the issues that are driving the migration or workload redistribution discussion?	rehost (i.e., lift and shift), re-platform or migrate the existing mainframe to an externally hosted solution.

Interactive Customer Workshops

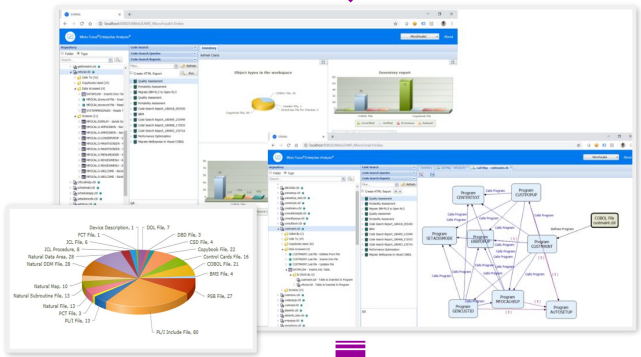
- Gather all details and data for assessment
- Create Targeted Questionnaire(s)
- Capture Application Source Code
- Review Applications, Costs and Operations

Application Source Code



Enterprise Analyzer

Assessment Project and Data



Portability Assessment Reports

Level 1 Qualifications Data		
Report Name	Count	Description
Count of Tables and Segments	2	The number of DB2 tables and IMS segments defined in the repository
CRUD Report	1624	View the data operations each program in the project performs and the data objects on which the programs operate
Types of Data Cobol VSAM KSDS	29	ORGANIZATION IS INDEXED file declarations
Types of Data Cobol Sequential	1025	ORGANIZATION IS SEQUENTIAL or ORGANIZATION IS RECORD SEQUENTIAL file declarations
Types of Data JCL DDG Base	1874	DSNs with (+1)
Variable Length Cobol	27	Variable length files require additional effort to convert
Variable Length JCL	122	The ability to know how level of effort estimates
File Usage Cobol Create	206	Files Opened in Cobol
File Usage Cobol Read	221	Files opened in Cobol
File Usage JCL Create	3362	Files referenced in JCL
File Usage JCL Read	5972	Files referenced in JCL
File Usage JCL Update	61	Files referenced in JCL
QData References to a Member in a PDS	2109	Inventory all JCL comb with the members that
Seed Files	8961	Identify seed files. File needed by the JCL are
Record Types	33	Multiple Q1 levels with

Application Assessment Study

- Project Summary
- Technical Mapping
- Recommendations
- Application(s) Summary

Estimated Project Timeline & Pricing

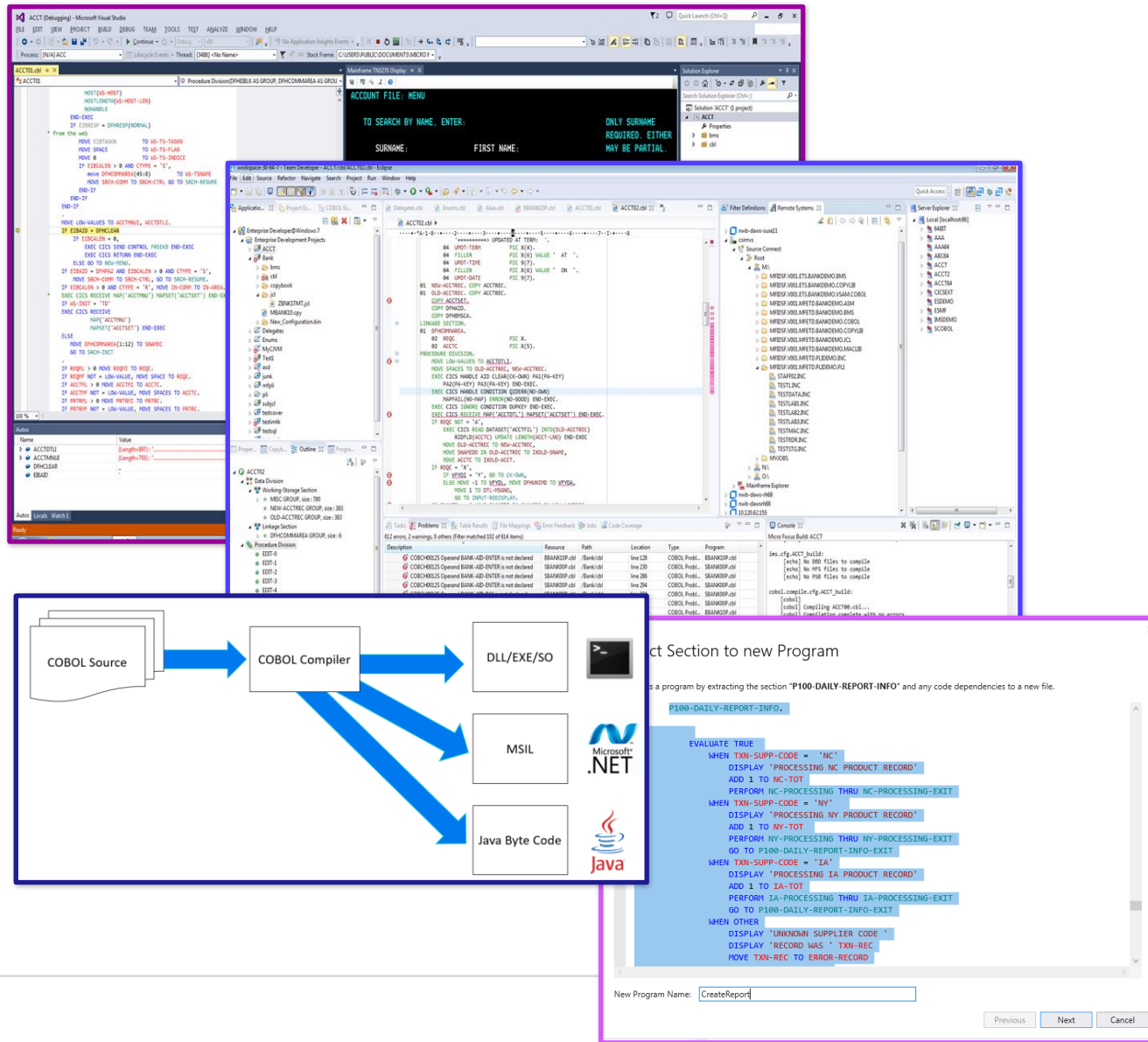
Timeline	Duration including Weekends	Duration (work days only)	Start Date	End Date
Initiation	35	26	August 1, 2017	September 5, 2017
Analysis & Design	59	44	September 6, 2017	November 6, 2017
Construction	106	77	November 7, 2017	February 21, 2018
Test Phase	71	52	February 22, 2018	May 4, 2018
Implementation	24	19	May 7, 2018	May 31, 2018
Post Implementation	21	15	June 1, 2018	June 12, 2018
Implementation #2	14	10	June 13, 2018	June 27, 2018
Post Implementation #2	14	10	June 28, 2018	July 12, 2018
Training		6	-	-
	306	226		

Projected ROI

Summary		
Current ANNUAL Mainframe Costs	Current Annual Cost of Running Mainframes	\$768,000
FULLY loaded ANNUAL Costs after Migration =	Annual Cost of Running on Micro Focus	\$45,000
	Annual Savings	\$657,854
One-time Project Costs	ONE TIME Project Costs - Hardware, Software, Consulting, **	\$619,400
	ROI (Annual Savings / Total Costs)	\$0.5
Details on One-time Project Costs		
	Micro Focus Consulting Services	\$ 278,240
	Micro Focus Software	\$ 189,800
	Hardware	\$ 18,810
	Non-Micro Focus Software	\$ 13,550
	Travel costs	\$ 5,000
Notes: Compares Current Mainframe Costs over next 5 Years to Cost After Migration		

Enterprise Developer

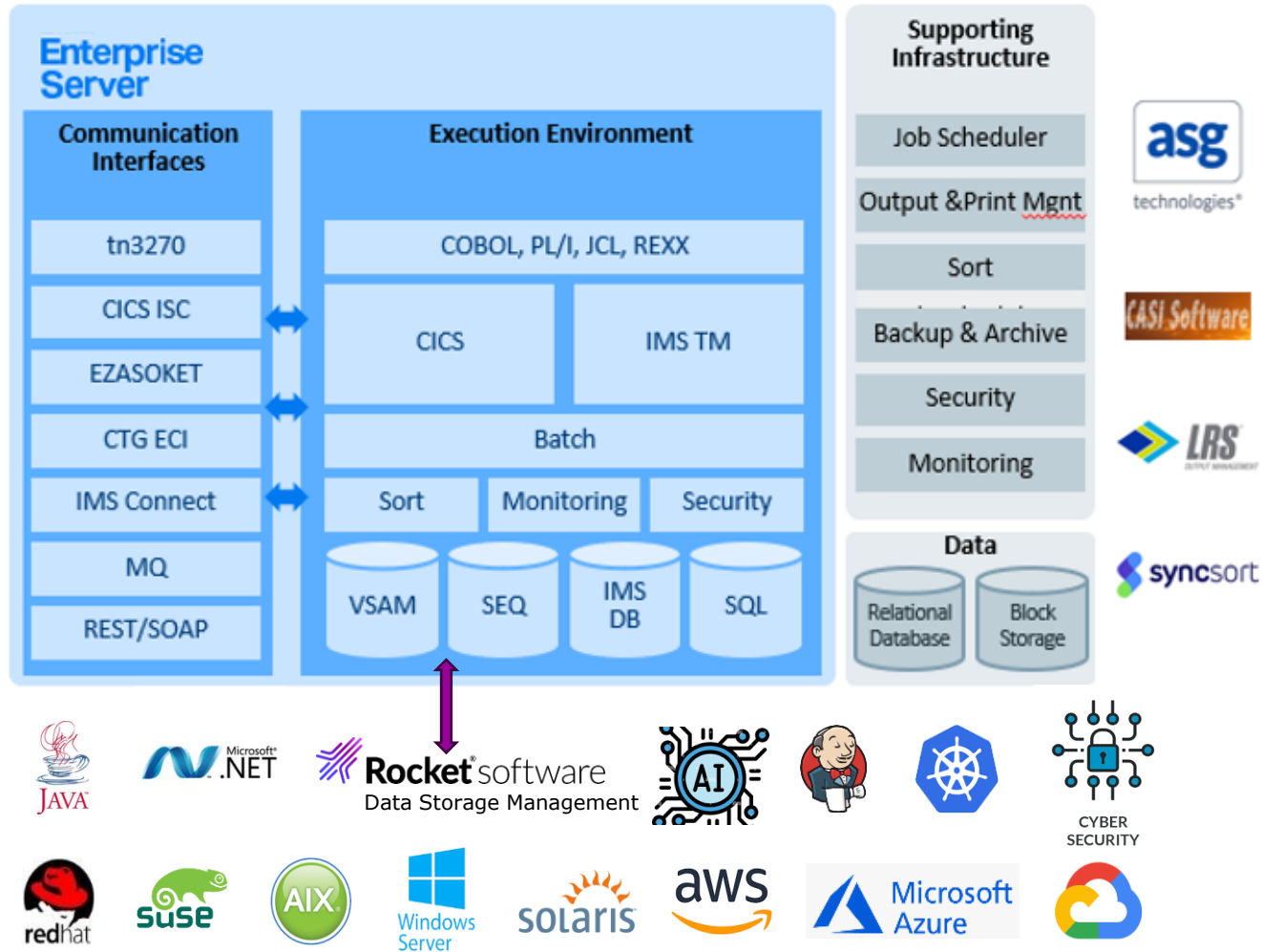
Streamline systems development



- Industry Standard IDEs improves programmer efficiency, is easy to use and cross-training
- Unifies mainframe and non-mainframe language development
- Develop, compile and test with no wait times and no reliance on the mainframe – remote, offshore or in the cloud
- Align with today's agile processes and delivery toolchains, including ALM Octane, Jira, Jenkins, Git, etc.
- Refactor-"Code Slicing" to extract complex code into new callable programs
- Integration into JAVA and .NET - Compile COBOL applications directly to .NET or Java Byte Code
- API creation – micro services, CICS web services and serverless functions

Enterprise Server

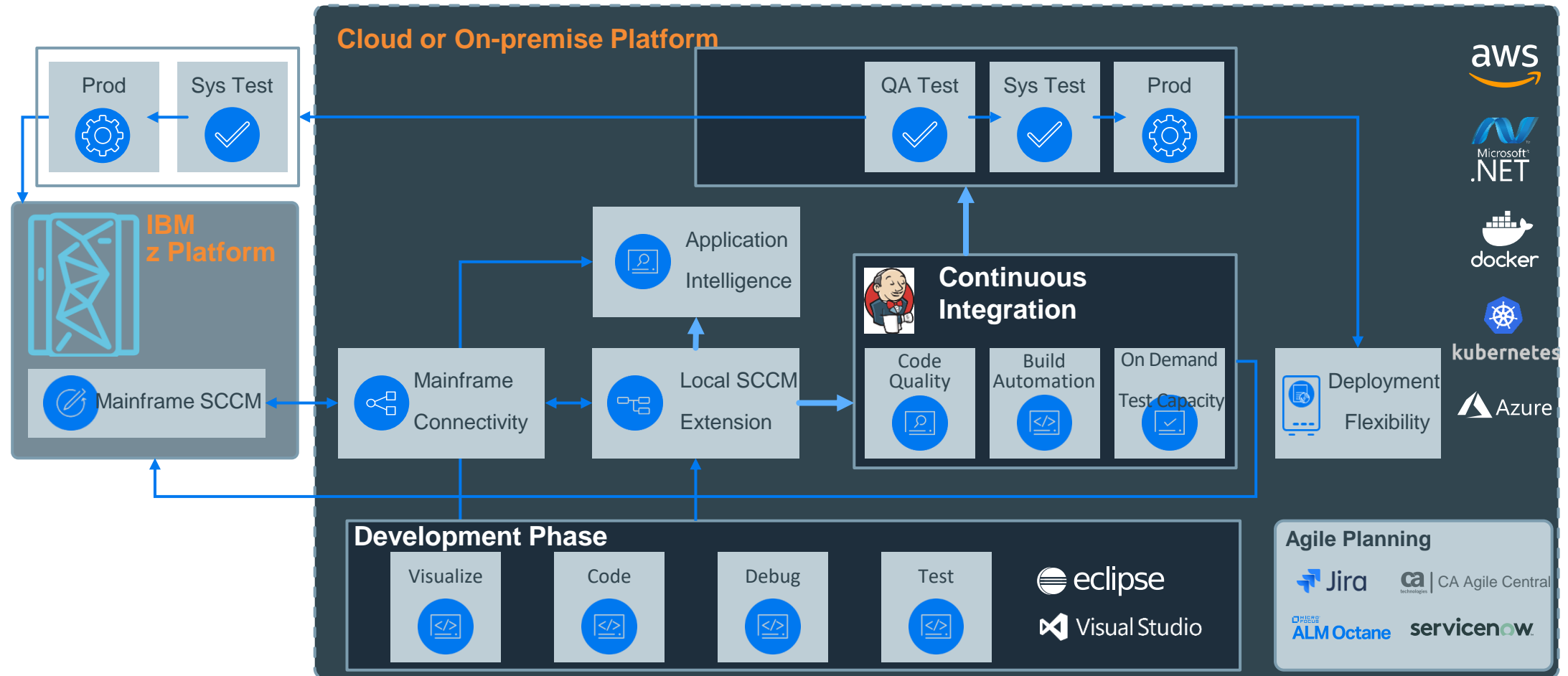
Fit for purpose - scalable, flexible application deployment



- Over 1,000 core production systems worldwide are powered by Rocket deployment technology
- Applications behave in the same way as the mainframe for faster deployments and reduced risk
- Mainframe Reliability, Availability and Serviceability
- High performance scalable architecture for high volume enterprise applications
- Flexible and scalable Hybrid IT deployment options to Linux, UNIX, Windows, Containers and Cloud
- Up to 90% cost savings by moving 'fit for purpose' workload to other key platforms
- Rich ecosystem of technology partners to support off mainframe deployments
- Flexibility to support multiple platforms, cloud providers and containers

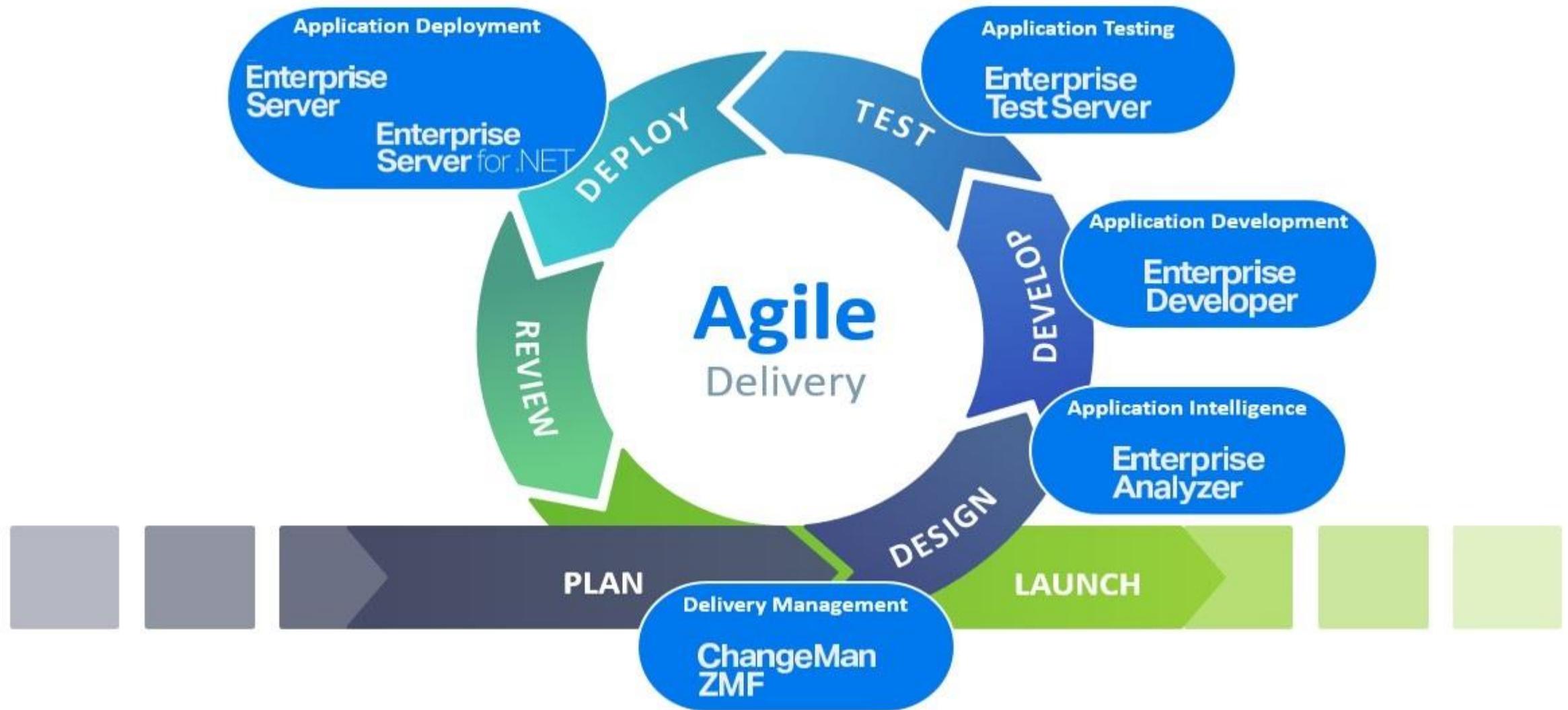
Continuous Integration Workflow

Rapid, flexible application delivery



AMC Enterprise Delivery Model

Scalable, flexible, continuous application delivery for the modern mainframe





A Subscription Model for Any Cloud Service Provider

- Cloud designed subscription pricing
- Cloud agnostic and customers can move between cloud vendors with no transfer fee
- Cloud Service Providers pricing depends on machine specification
- Model uses straightforward vCPU metric for simple pricing
- AWS offer a managed service for mainframe modernization built on our Enterprise technology, called M2. This is licensed directly from AWS

Why Rocket AMC Enterprise Suite

- 40+ years' experience – Focused 100% on Software Solutions
- Support more Platforms than any other solution or vendor
- Scalability & Performance and large MIPS migrations
- Mainframe Product/Software Support Diversity
- COBOL, PL/I, JCL, BMS, MFS, JES, IMS TM/DB, VSAM, PDS, GDG, SQL Server, Oracle and DB2 LUW
- Supports: Mobile, Web, Clouds, On-Prem
- 50+% Annual Savings in System Operating Costs
- 30+% Development Productivity Improvement
- 40%+ (up to 8x) System Performance Improvement
- 15+% Quality Improvement
- 20+% Development Cost Reduction – MIPS

AMC Enterprise Roadmap

- Continuous new development and products features
- Scheduled for at least one major release each year
- Application enhancements released as developed
- Continue to build relations with cloud providers
- Licensing model is now Subscription based



Rocket presentation disclaimer

THE INFORMATION CONTAINED IN THIS PRESENTATION IS PROVIDED FOR INFORMATIONAL PURPOSES ONLY. WHILE EFFORTS WERE MADE TO VERIFY THE COMPLETENESS AND ACCURACY OF THE INFORMATION CONTAINED IN THIS PRESENTATION, IT IS PROVIDED "AS IS" WITHOUT WARRANTY OF ANY KIND, EXPRESS OR IMPLIED. IN ADDITION, THIS INFORMATION IS BASED ON ROCKET'S CURRENT PRODUCT PLANS AND STRATEGY, WHICH ARE SUBJECT TO CHANGE BY ROCKET WITHOUT NOTICE. ROCKET SHALL NOT BE RESPONSIBLE FOR ANY DAMAGES ARISING OUT OF THE USE OF, OR OTHERWISE RELATED TO, THIS PRESENTATION OR ANY OTHER DOCUMENTATION. NOTHING CONTAINED IN THIS PRESENTATION IS INTENDED TO, NOR SHALL HAVE THE EFFECT OF, CREATING ANY WARRANTIES OR REPRESENTATIONS FROM ROCKET (OR ITS SUPPLIERS OR LICENSORS), OR ALTERING THE TERMS AND CONDITIONS OF ANY AGREEMENT OR LICENSE GOVERNING THE USE OF ROCKET PRODUCTS OR SOFTWARE.

Rocket's statements regarding its plans, directions, and intent are subject to change or withdrawal without notice at Rocket's sole discretion. Information regarding potential future products is intended to outline our general product direction and it should not be relied on in making a purchasing decision. The information mentioned regarding potential future products is not a commitment, promise, or legal obligation to deliver any material, code or functionality. Information about potential future products may not be incorporated into any contract. The development, release, and timing of any future features or functionality described for our products remains at our sole discretion.

Rocket and Rocket logo are trademarks of Rocket Software Inc. ("Rocket Software"), registered in many jurisdictions worldwide. Other product and service names might be trademarks of Rocket Software or other companies. A current list of other Rocket Software-owned trademarks and guidelines of the permitted use are available at <https://www.rocketsoftware.com/company/legal/trademarks>

Other company, product, or service names may be trademarks or service marks of others.

© 2024 Rocket Software Inc. or its affiliates. All rights reserved.

Thank You

- Michael Kaplan
- Senior Account Executive, Federal Government | NA AMC Enterprise
- mkaplan@rocketsoftware.com
- Mobile: 804.908.2207
- Website: <https://www.rocketsoftware.com/>
- LinkedIn: <https://www.linkedin.com/in/mikekap>

