

# **Modernization Revolution**

## **System Reform**

## Achievement

**23** Years of history

**800+** Projects

**50+** Active projects

## Personnel

**40+** Researchers

**460+** Migration engineers

**1,700+** System Reform  
consortium members

## Services

**Modernize all major types of legacy & open legacy systems**

**Services from planning to user test support**

**Create pure open system includes data standardization, etc.**

**Introduction of IT trends as Business dynamic visualization, etc.**

**Change and add functions**

Recognized by 60+ of top 200 companies listed on Tokyo Stock Exchange

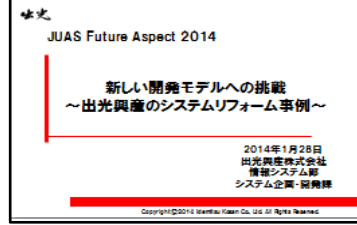
Nissan Motor



Japan Airlines



Idemitsu Kosan



TOTO



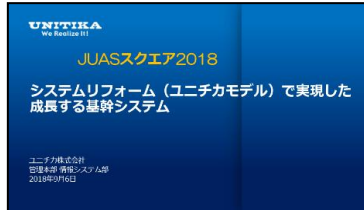
Kirin



ITEC Hankyu Hanshin



UNITIKA



Kyocera



Mazda



Softbank BB



Kao



Murata Manufacturing



Petroleum resource



Hankyu Ad Agency



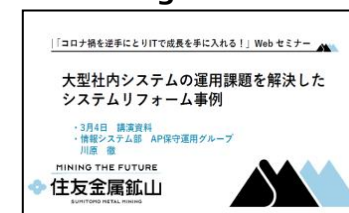
JAL Infotec



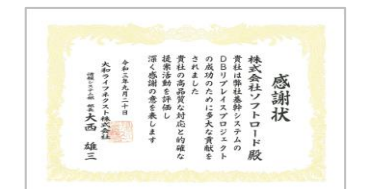
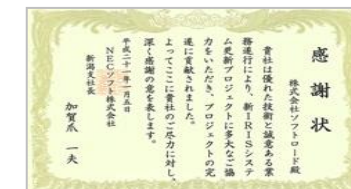
NITORI



Sumitomo Metal Mining



Sumitomo Bakelite





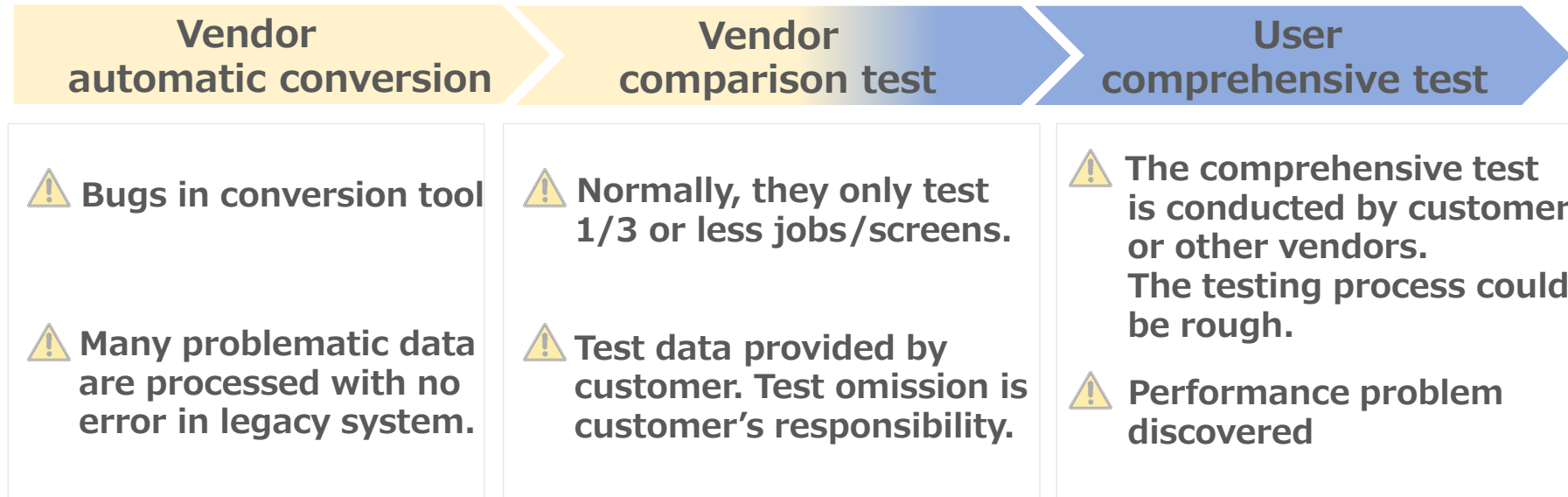
## **Straight conversion is not powerful enough**



- Convert with many bugs.
- Create special Java system with big Java foundation for old language functions.
- Cannot handle many elements of operating environment.
- Cannot conduct inventory strictly.
- etc.



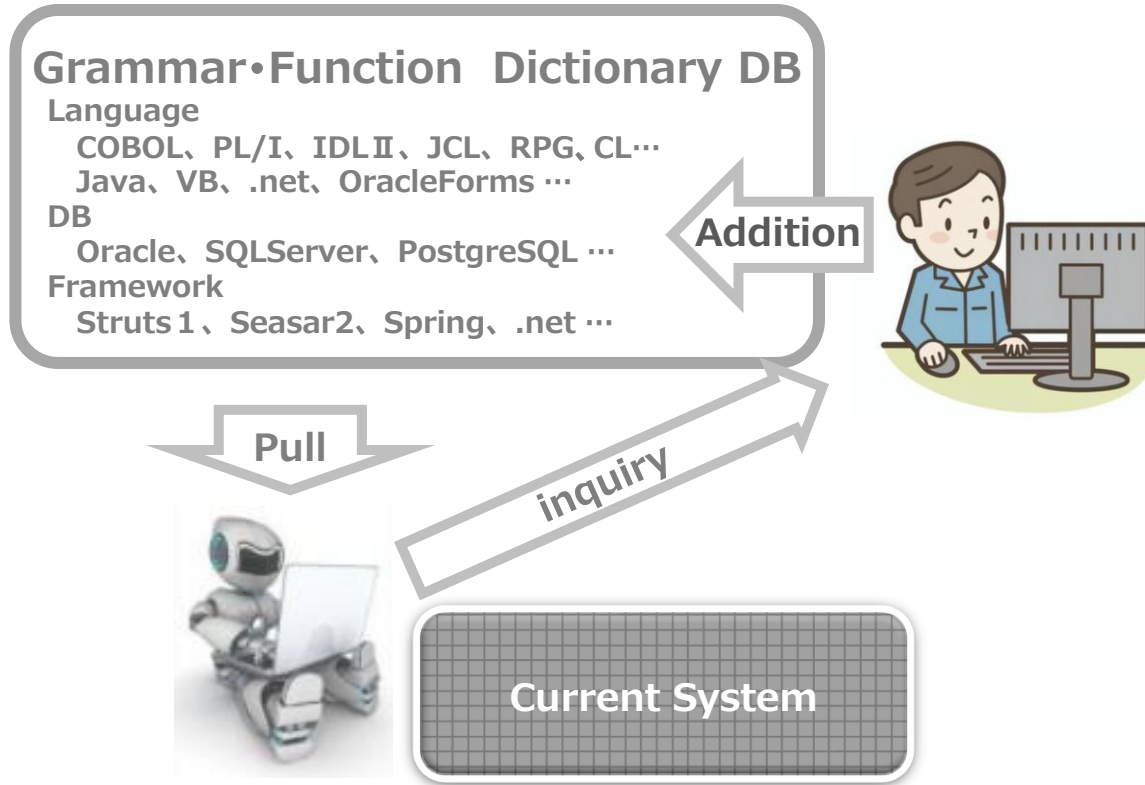
**Customers have to deal these issues manually by themselves.  
It poses big risk on quality, cost, and delivery schedule.**



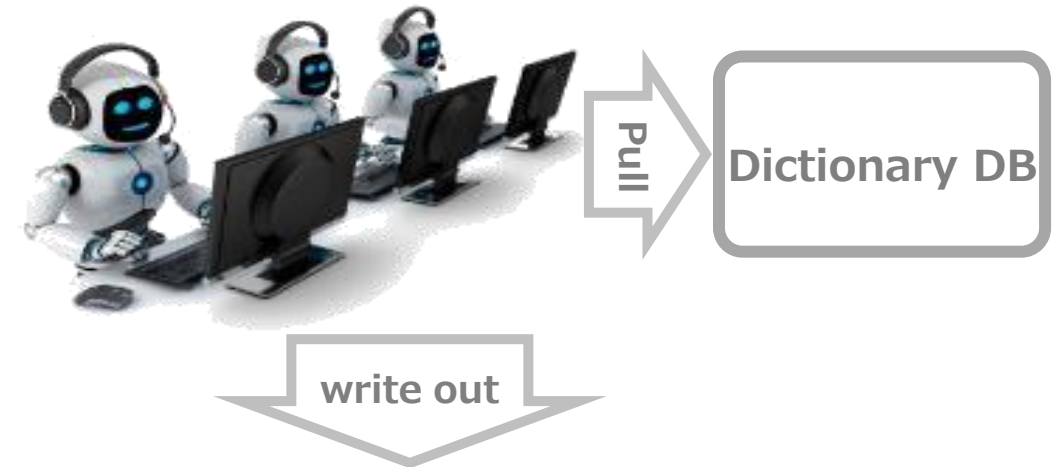
**Vendor lacks analyzing capability, business knowledge.  
It becomes a difficult job and  
responsibility of customer.**





**STEP1** Understand the processing content in existing sources

Understand what the program does.

**STEP2** Generating the correct language/structure

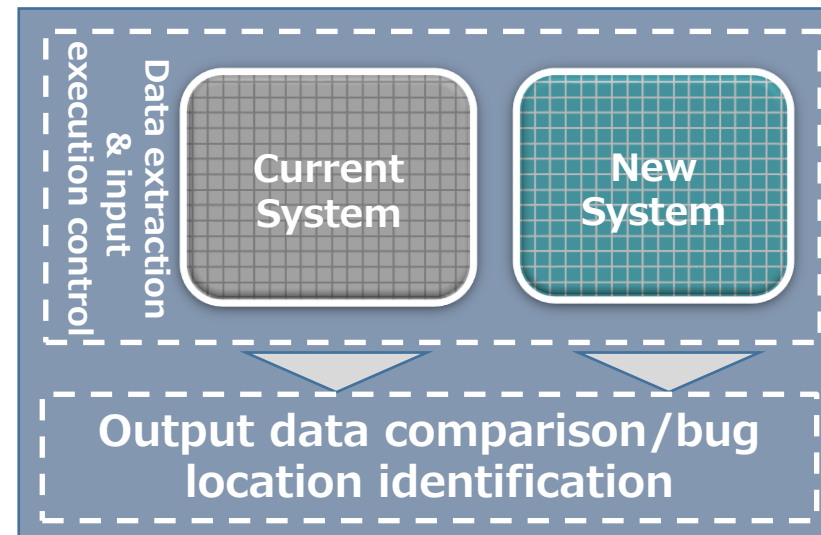
- Correct Java as coded by programmer
- Structure conversion to RDB, CSV
- Conversion to customer Java FW
- Improved performance by OPEN style
- Digit expansion, etc.

**Almost 100% conversion: extremely high quality, low cost, and high maintainability.**

## Automated Testing Tools



- Run the program
- Compare results
- Identify bug location
- Etc.



## Achieving Test Coverage

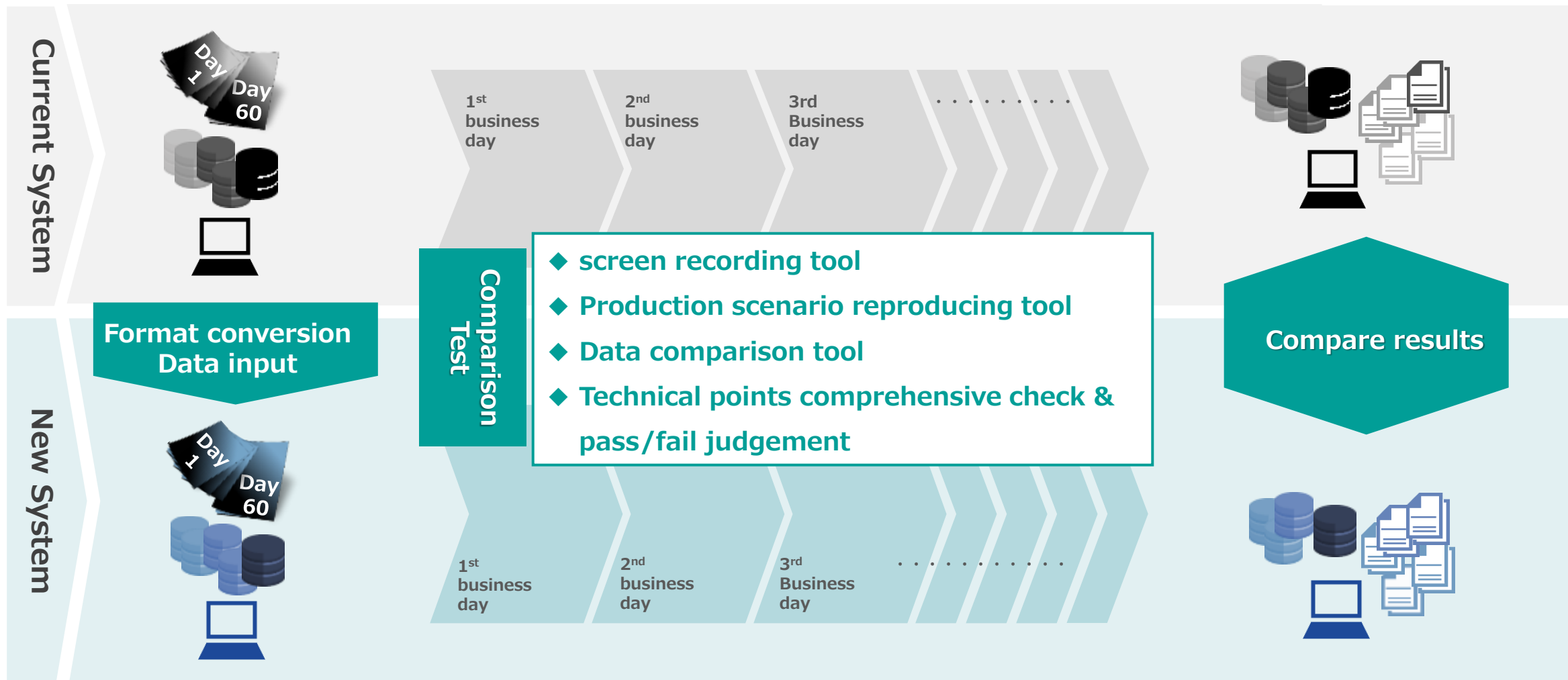


- Identify each technical point implemented/not implemented
- Instructions for missing test points
- Pass judgment
- Etc.



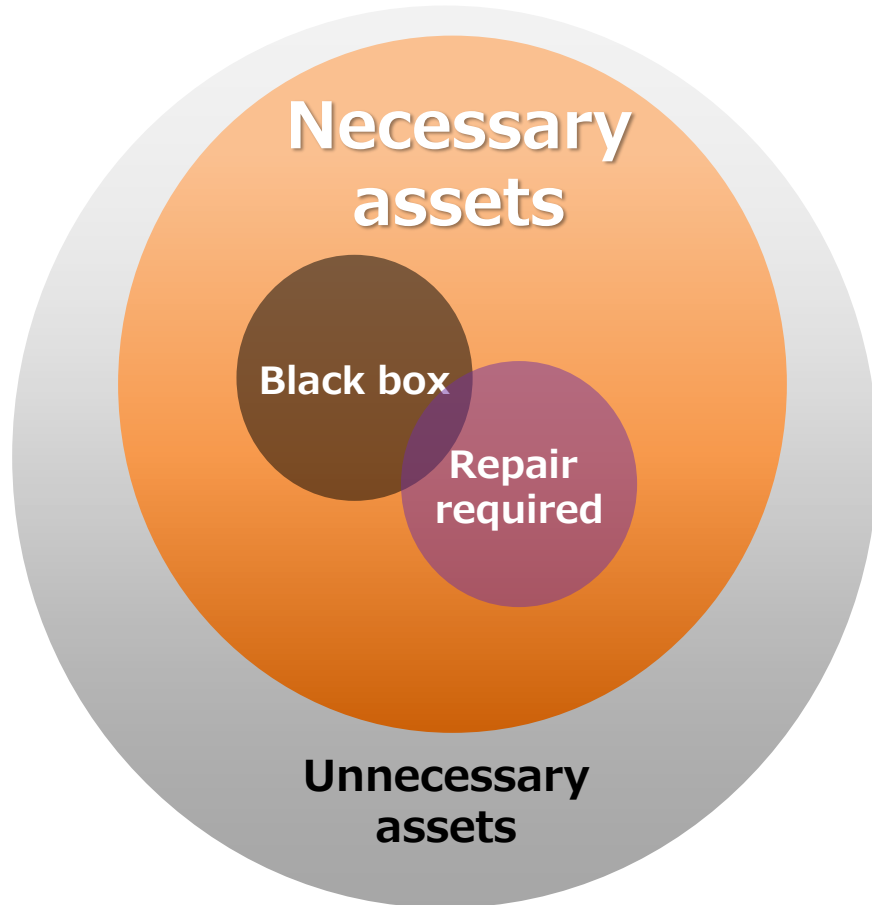
## Test Automation & Thorough Testing of Technical Points

## Comparison test with high-volume data from actual business days

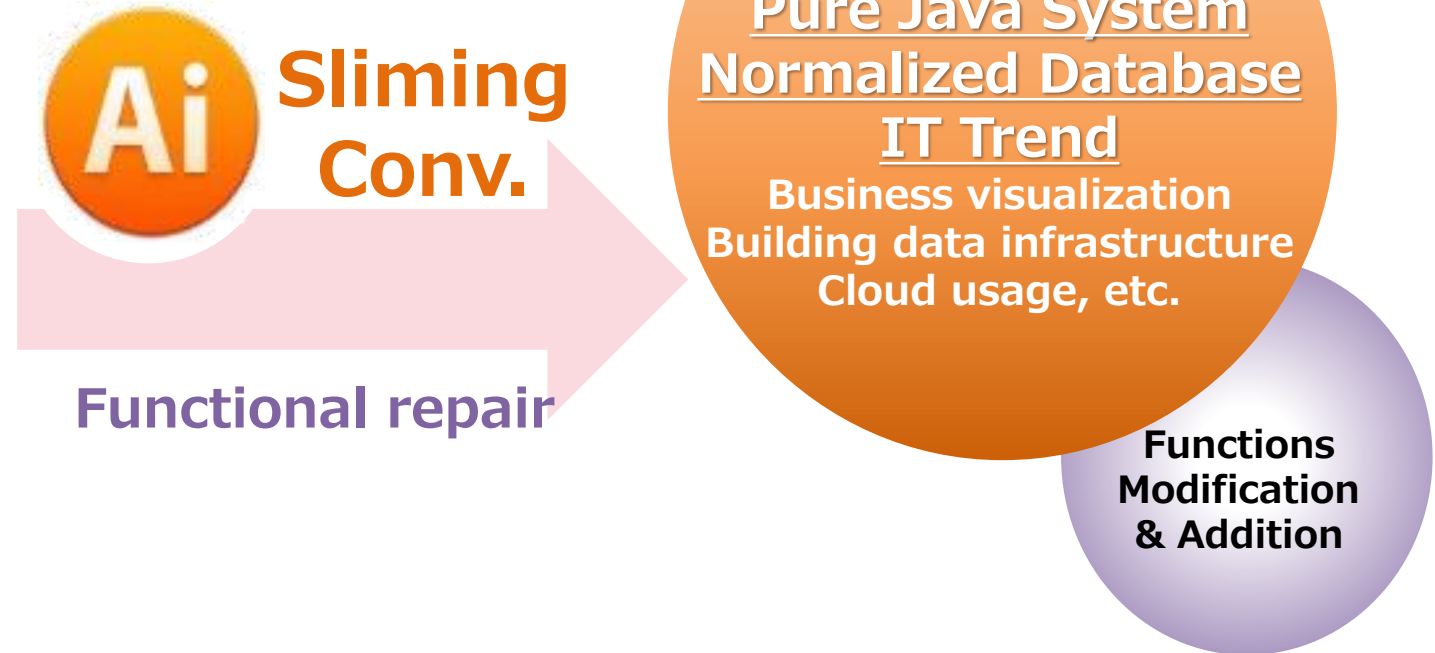




## Current System

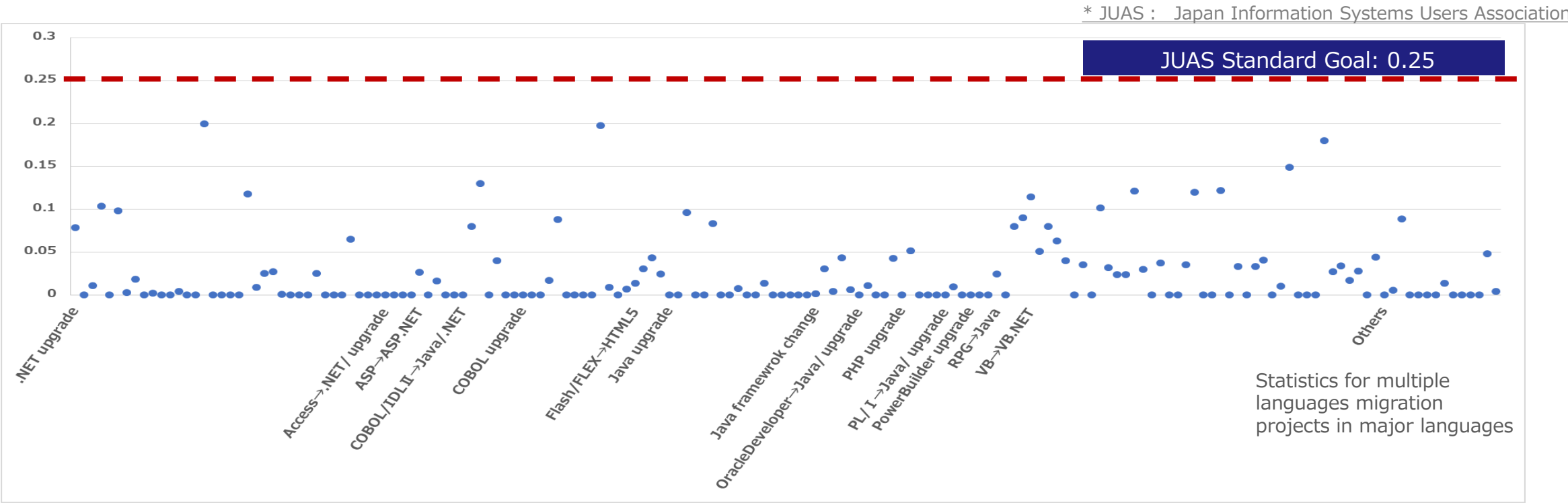


## New System



**With AI, we provide extremely high quality and low-cost modernization with function improvement.**

## Post-delivery Defect



Data source: All system migration projects with a scale of 10KL (thousand line) or more **from January 2017 to December 2021.**

Formula used by JUAS to calculate Defect Density:

$$(2 * \text{number of significant defects} + \text{number of general defects} + 0.5 * \text{number of slight defects}) / \text{scale (person-months)}$$

Scale(person-months): calculated by JUAS standard productivity

\* Please consult us for other conversion patterns.

Legacy system	COBOL	⇒	Version upgrade (OPENCOBOL), Java, .net, PL/SQL
	RPG	⇒	Java, .net, PL/SQL
	PL/ I	⇒	Version upgrade (open) , Java, .net, PL/SQL
	NATURAL	⇒	Java, .net
	APL	⇒	VBA, .net, Java
	IDL II	⇒	Java
	EASY PLUS	⇒	Java
	Fortran	⇒	C, VB, .net／C#, .net, Java
	Assembler	⇒	COBOL, C, Java
OPEN system	VB	⇒	VB.net, C#.net, ASP, .net, Java
	ASP	⇒	ASP.net, PHP, Java
	.net	⇒	Version upgrade, Java
	Java	⇒	Version upgrade (including framework changes)
	OracleDeveloper	⇒	Version upgrade, Java, .net
	ACCESS	⇒	Version upgrade, .net, Java
	Flex／Flash	⇒	HTML5
	PowerBuilder	⇒	Version upgrade, .net, Java
	Delphi	⇒	Version upgrade, .net, Java
	Notes	⇒	SharePoint, Java
	PHP	⇒	Version upgrade, Java, ASP, .net
	HOLON	⇒	.net, Java
	VAGen	⇒	Java, .net

## OS:

※Please consult us for other conversion patterns.

Legacy system	Main frame	⇒	Linux, Unix, Windows
	Windows	⇒	Version upgrade, Linux, Unix
OPEN system	Unix	⇒	Linux, Windows
	Linux	⇒	Version upgrade, Windows

## DB

※Please consult us for other conversion patterns.

Legacy system	VSAM/ISAM/VSAS, ADABAS, IMS DB, AIM, XDM/RD/XDM/SD, ADBS, RIQS/RIQSII, etc.	⇒	Oracle, SQL Server, DB2, PostgreSQL
	SQLServer	⇒	Version upgrade, Oracle, DB2, PostgreSQL
OPEN system	Oracle	⇒	Version upgrade, SQL Server, DB2, PostgreSQL
	DB2	⇒	Version upgrade, Oracle, SQL Server, PostgreSQL
	PostgreSQL	⇒	Version upgrade, Oracle, SQL Server, DB2
	MySQL	⇒	Version upgrade, Oracle, SQL Server, DB2, PostgreSQL

With the most flexible conversion tool, in addition to the above patterns, we are able to respond to difficult migrations requirement such as changes to customer frameworks, special language / DB migration, data conversion to RDB, etc.

## Deloitte.

Top level adding value



## SoftRoad

low cost & low user workload modernization



**Use full AWS advantage by cloud native**



## COBOL⇒JAVA

### ◆ New mission-critical accounting system

Legacy system size: 3000KL

Main migration requirements: COBOL ⇒ Java

Fujitsu XSP ⇒ Red Hat Enterprise Linux 8.4(AWS)

### ◆ Cost management system

Legacy system size: 1000KL

Main migration requirements: COBOL, COBOLS, COBOLX, IDLⅡ, macro ⇒ Java

NEC ACOS4 ⇒ Linux

### ◆ Next-term mission-critical system

Legacy system size: 700KL

Main migration requirements: YPS/COBOL ⇒ Java

Fujitsu MSP ⇒ Linux

### ◆ Production management mission-critical system

Legacy system size: 2200KL

Main migration requirements: COBOL ⇒ Java

IBM OS IV/XSP ⇒ Windows Server

### ◆ ACOS system

Legacy system size: 5300KL

Main migration requirements: COBOL/S, HPL, PL/I, FORTRAN ⇒ Java

ADBS, RIQS ⇒ Oracle Database 19c

NEC ACOS4/XS R2.11⇒ Red Hat Enterprise Linux

## COBOL⇒JAVA+OPENCOBOL

### ◆ Six systems of production & sales & after-service in manufacturing industry on two IBM mainframes

Legacy system size: 5500KL

Main migration requirements: COBOL ⇒ Java/MF COBOL

Natural ⇒ Java

PL/I ⇒ MF PL/I

ADABAS ⇒ SQL Server

IBM OS/390 V2 ⇒ Windows Server

### ◆ Mainframe system

Legacy system size: 500KL

Main migration requirements: COBOL ⇒ Java /MF COBOL

XDM/RD + XDM/SD + PDM II ⇒ PostgreSQL

Hitachi VOS3 ⇒ Windows Server

### ◆ Production management system

Legacy system size: 3300KL

Main migration requirements: COBOL, PL/I, ASM ⇒ MF COBOL

IBM z/OS ⇒ Red Hat Enterprise Linux

### ◆ Shipment management system

Legacy system size: 400KL

Main migration requirements: COBOL ⇒ NetCOBOL

AIM/NDB ⇒ Oracle12c

Fujitsu OSIV XSP ⇒ Windows Server 2012

Standard

## RPG⇒JAVA

### ◆ Sales & in-stock & claims & debts & accounting in manufacturing

Legacy system size: 4300KL

Main migration requirements: COBOL, RPG, RPGLE, CLP, CLLE ⇒ Java  
AS400 ⇒ Red Hat Enterprise Linux

### ◆ Information system

Legacy system size: 500KL

Main migration requirements: COBOL, CLP ⇒ Java  
DB2 ⇒ Enterprise Postgres SE media (64)14  
IBM i(V7R4) ⇒ Linux

### ◆ Manufacturing system

Legacy system size: 400KL

Main migration requirements: RPG/RPGLE/COBOL/CLP ⇒ Java 17(OracleJDK17)  
QRY ⇒ Java 17  
DB2/400 ⇒ PostgreSQL 11  
IBM i 7.2 ⇒ Red Hat Enterprise Linux 8(AWS)

### ◆ Mission-critical system

Legacy system size: 2800KL

Main migration requirements: RPG4, CLP ⇒ Java 17  
QUERY ⇒ Java 17  
DB2/400 ⇒ Microsoft SQL Server  
IBM i V7R1 ⇒ Windows Server 2019

## JAVA system update

### ◆ Mission-critical system

Legacy system size: 2100KL

Main migration requirements: Struts1+ Seasar2 + S2Dao ⇒ Thymeleaf3+SpringBoot + Mybatis

### ◆ Sales system

Legacy system size: 500KL

Main migration requirements: Struts1.1 + Hibernate ⇒ Spring MVC 5.2 + Hibernate 5.4

### ◆ Store equipment management system

Legacy system size: 500KL

Main migration requirements: Struts2 + Spring Framework + iBatis ⇒ SpringBoot+MyBatis

### ◆ Insurance company's Java system

Legacy system size: 2800KL

Main migration requirements: WACs(JavaEE) ⇒ NSF(Struts1)

### ◆ Auto company's Java system (three systems)

Legacy system size: 1000KL

Main migration requirements: WACsV4.3.4、 Struts1.1 ⇒ SpringMVC 4.3.10

### ◆ Airline's Java system (three systems)

Legacy system size: 1600KL

Main migration requirements: WACs4.0 ⇒ Struts2.2 + Spring3.0

### ◆ Manufacturing management system

Legacy system size: 3300KL

Main migration requirements: Apcoordinator + Fujitsu EZD V2.1 ⇒ customized SpringBoot  
2.7.5+ EJB 3

## C/S system ⇒ WEB

### ◆Base system

Legacy system size: 2600KL

Main migration requirements: VB6.0 ⇒ Java+VB.NET

### ◆Housing-related system

Legacy system size: 800KL

Main migration requirements: VB5.0 ⇒ Java

### ◆Production statistics management system

Legacy system size: 190KL

Main migration requirements: PowerBuilder ⇒ Java

### ◆Insurance management system (30 systems)

Legacy system size: 300KL

Main migration requirements: Delphi 10.1 ⇒ Java  
VB.NET2015 ⇒ Java

### ◆Management system

Legacy system size: 300KL

Main migration requirements: Delphi 10.1 ⇒ Java1.8

### ◆Production management system

Legacy system size: 330KL

Main migration requirements: Oracle Forms 12c ⇒ Java(OpenJDK16)

### ◆Product management system

Legacy system size: 900KL

Main migration requirements: C ⇒ Java17  
Pro\*C ⇒ Java17

## Others

### ◆Business support system (VB⇒VB.NET)

Legacy system size: 1450KL

Main migration requirements: VB6.0/C ⇒ VB.NET2017

FlexGrid/True DBGrid Pro ⇒ ComponentOne

SPREAD 7.0J ⇒ VB.NET standard controls

### ◆Management system (VB⇒VB.NET, DB change)

Legacy system size: 1600KL

Main migration requirements: VB6.0/C ⇒ VB.NET2017,  
PLSQL ⇒ T-SQL  
Oracle 9i ⇒ SQL Server

### ◆Import & export management system (FLEX⇒HTML5, de-IE)

Legacy system size: 2000KL

Main migration requirements: Flash + ActionScript2.0 ⇒ HTML5 + TypeScript  
Struts1.2 ⇒ SpringMVC  
IE11 ⇒ Edge 40, Chrome 64

### ◆Attendance check-in system (PHP framework change)

Legacy system size: 2800KL

Main migration requirements: PHP 4.4.9 ⇒ PHP 7.4, Mojavi 2.0 ⇒ Laravel 6

### ◆Management system (OracleForms upgrade)

Legacy system size: 200KL

Main migration requirements: OracleForms6i ⇒ OracleForms12c

### ◆Management system (PowerBuilder upgrade)

Legacy system size: 460KL

Main migration requirements: PowerBuilder 6.5 ⇒ PowerBuilder 2017

# The End

## Let us usher in a new era of system development.

For more information,  
please scan the QR code below.



### Contact Us

**Company name: SoftRoad America CO., LTD.**

**Mailing address :P. O. Box 2685, Chapel Hill, NC 27515, USA**

**Phone:+1-919-942-3664**

**E-mail: [info@softroadamerica.com](mailto:info@softroadamerica.com)**

**HP : <https://www.softroadamerica.com/>**